

SOLUZIONI DI INSTALLAZIONE

PER GRUPPI ANTINCENDIO

INSTALLATION SOLUTIONS

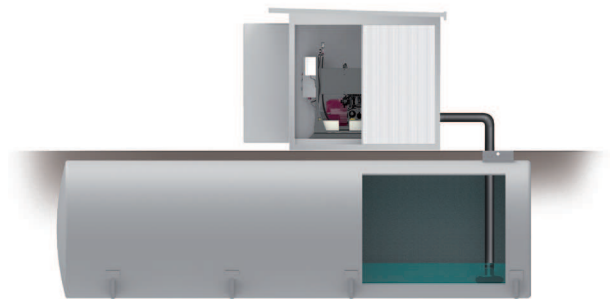
FOR BASE JOINT FIRE FIGHTING UNITS

GRUPPI ANTINCENDIO BASE GIUNTO INSTALLATI SU VANI TECNICI A NORMA EN12845 - UNI10779 - UNI11292 E RISERVE IDRICHE TECHNICAL ROOMS FOR BASE COUPLING FIRE FIGHTING UNITS ACCORDING TO EN12845 - UNI10779 - UNI11292 N STORAGEORMS AND WATER

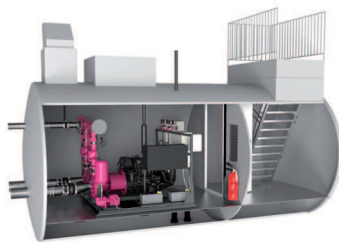
Gruppo antincendio installato su box da esterno UNISHELT e riserva idrica da esterno.
External box UNISHELT for fire fighting unit and external water storage.



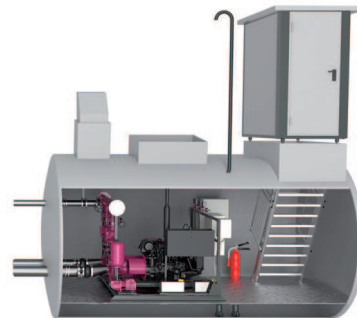
Gruppo antincendio installato su box da esterno UNISHELT e riserva idrica da interro.
External box UNISHELT for fire fighting unit and underground water storage.



Gruppo antincendio installato su vano tecnico in acciaio da interro PTS-UNIVAIN con ingresso a cielo aperto.
Underground steel premise PTS-UNIVAIN composed by entrance on top and technical room for fire fighting unit.

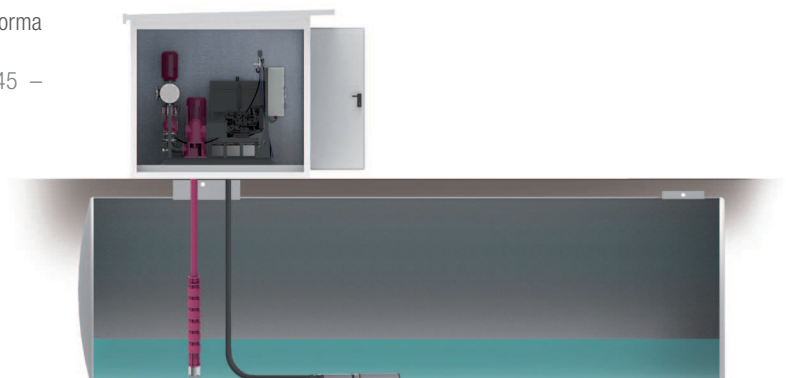


Gruppo antincendio installato su vano tecnico da interro BTS-UNIVAIN con ingresso da box esterno.
Underground steel premise BTS-UNIVAIN composed by external box to enter in the technical room and technical room for fire fighting unit.



SOLUZIONI DI INSTALLAZIONE PER GRUPPI ANTINCENDIO CON POMPE VERTICALI TURBINE (GAMMA VTS) INSTALLATION SOLUTIONS FOR FIRE FIGHTING UNITS WITH VERTICAL TURBINE PUMPS (VTS RANGE)

Gruppo antincendio installato su vano tecnico da esterno unishelt a norma EN12845 – UNI10779 – UNI11292 e riserva idrica da interro
External box unishelt for fire fighting unit according to EN12845 – UNI10779 – UNI11292 norms and underground water storage.



GRUPPI ANTINCENDIO BASE GIUNTO INSTALLATI SU SISTEMI INTEGRATI A NORMA EN12845 – UNI10779 - UNI11292
INTEGRATED SYSTEMS FOR BASE COUPLING FIRE FIGHTING UNITS ACCORDING TO EN12845 – UNI10779 – UNI11292 NORMS

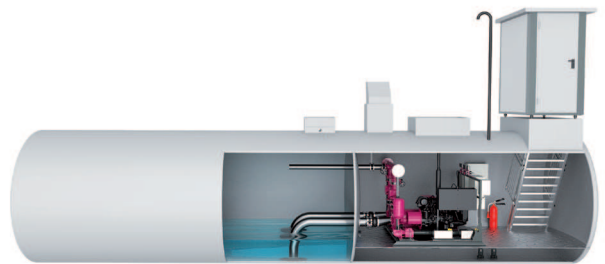
Sistema integrato in acciaio da interro PTS-IDROTANK composto da vano scala per accesso a cielo aperto, vano tecnico per alloggio gruppo antincendio e riserva idrica.

Underground steel integrated system PTS-IDROTANK composed by entrance on top, technical room for fire fighting unit and water storage.



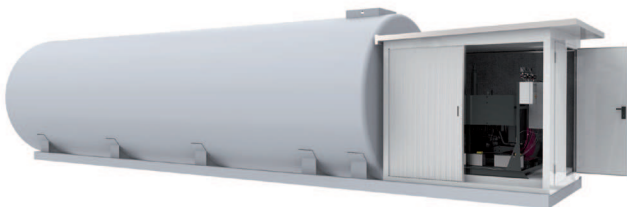
Sistema integrato in acciaio da interro BTS-IDROTANK composto da box per accesso dall'esterno, vano tecnico per alloggio gruppo antincendio e riserva idrica.

Underground steel integrated system BTS-IDROTANK composed by external box to enter in the tank, technical room for fire fighting unit and water storage.



Sistema integrato da esterno UNITANK composto da box per alloggio gruppo antincendio e riserva idrica in acciaio.

External integrated system UNITANK composed by box for fire fighting unit and steel water storage.



SOLUZIONI DI INSTALLAZIONE PER GRUPPI ANTINCENDIO CON POMPE SOMMERSE (GAMMA SM)
INSTALLATION SOLUTIONS FOR FIRE FIGHTING UNITS WITH SUBMERSIBLE PUMPS (SM RANGE)

Gruppo antincendio installato su vano tecnico da esterno unishelt a norma EN12845 – UNI10779 – UNI11292 e riserva idrica da interro con elettropompe sommerse installate all'interno.

External box unishelt for fire fighting unit according to EN12845 – UNI10779 – UNI11292 norms and underground water storage with submersible electric pumps installed inside.

